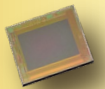


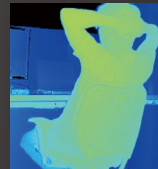


Brookman's ToF depth sensor



Excellent ambient light tolerance & Fast-tracking with lessen flying pixels

A ToF camera is a depth imaging camera system that is capable of real-time 3D motion /object tracking and modeling. Our patented CMOS-ToF depth image sensor BT008D and unique depth sensing techniques are able to capture a moving object in outdoors. We provide high-quality CMOS -ToF depth image sensors exactly tailored to each individual situation and requirements.



Depth image
(Color mapping)



Point cloud
(Infrared Image Fusion)

Key 1

Accurate dynamic 3D sensing by Indirect ToF Short Pulse Modulation reliably detects and tracks moving objects while suppressing flying pixels

Key 2

Dynamic Ambient Light Suppression Technology is able to minimize a depth measurement error in outdoors (High ambient light tolerance)

Key 3

Highly flexible sensor operating controls make it easy to built-up a system for any situations. (User and System -friendly)

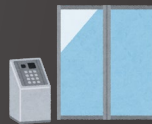
Example of Target Application



Gesture control



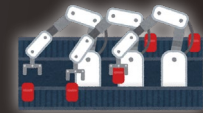
AGV Mobile Robot



Security control



People behavior analysis



Factory automation

Brookman's CMOS-ToF Depth Sensing Camera module



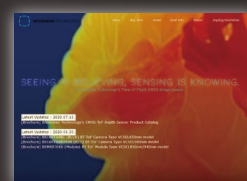
BEC80T standard type
(VCSEL 850/940nm)



BEM80T mini module
(VCSEL 850/940nm)

Get More Information

[Brookman CMOS-ToF](#)



Brookman's CMOS-ToF
Official Website



Catalog